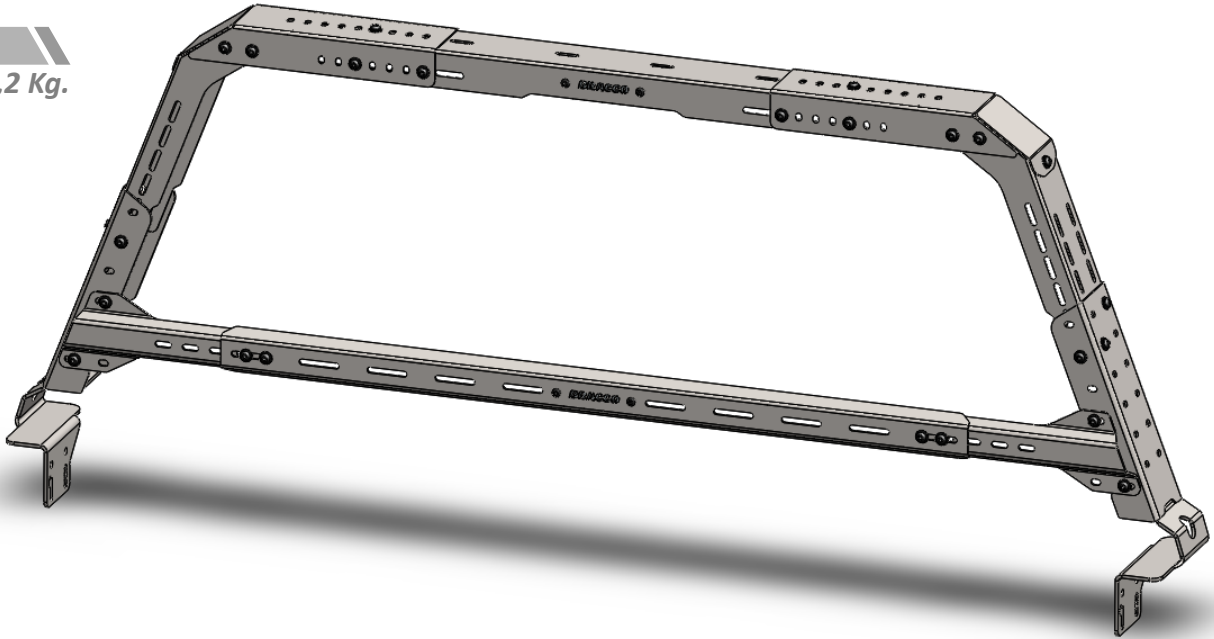
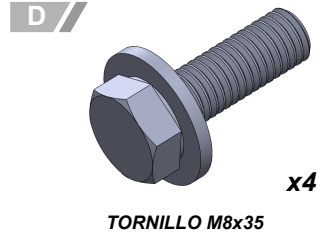
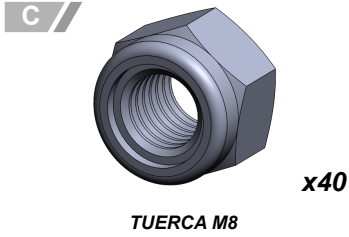
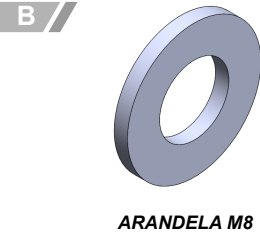
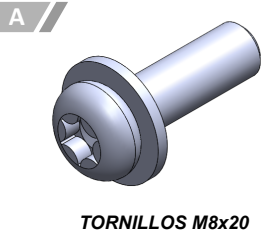


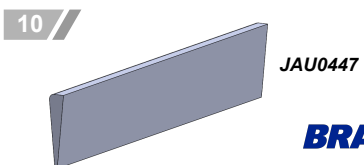
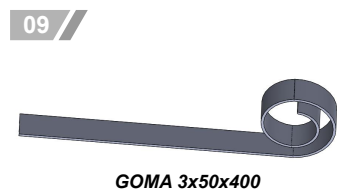
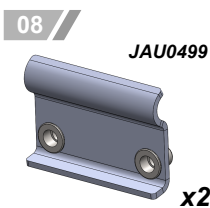
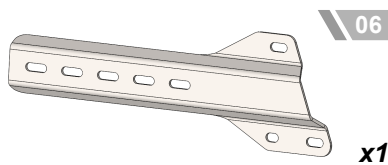
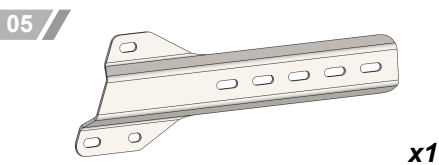
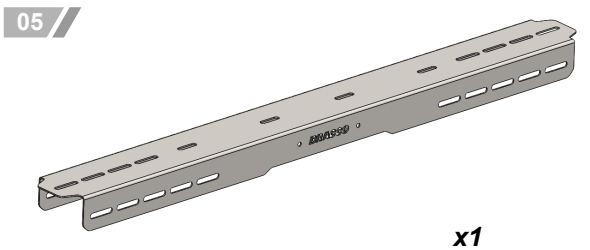
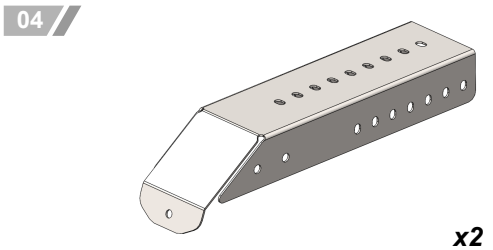
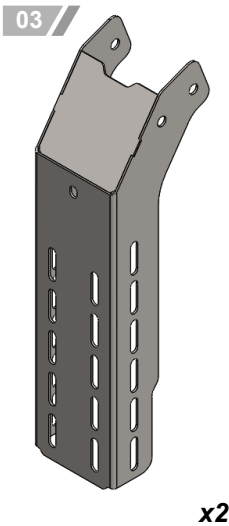
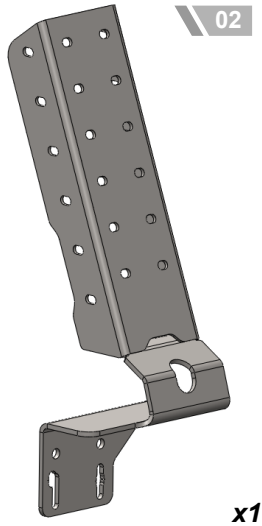
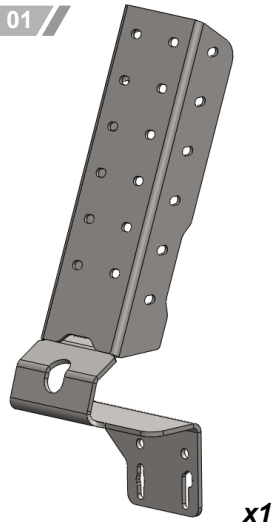
PESO:  
17,2 Kg.



## BULONERÍA

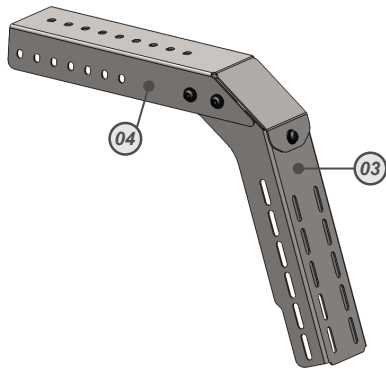
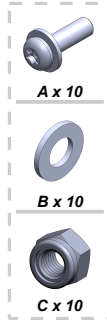


## DETALLE DE DESPIECE

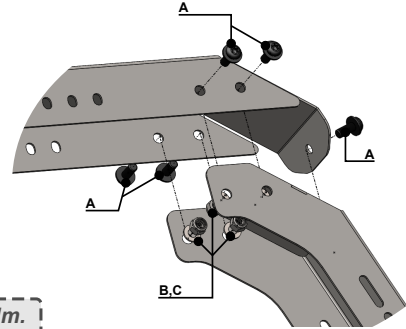


## ENSAMBLADO

### PASO 1

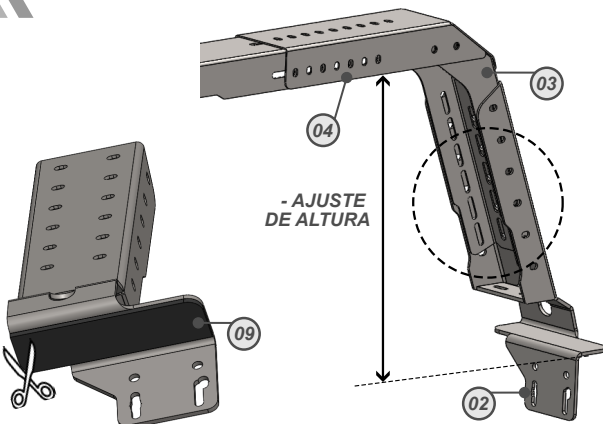
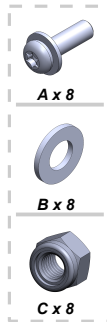


- ARMAR AMBAS ESQUINAS



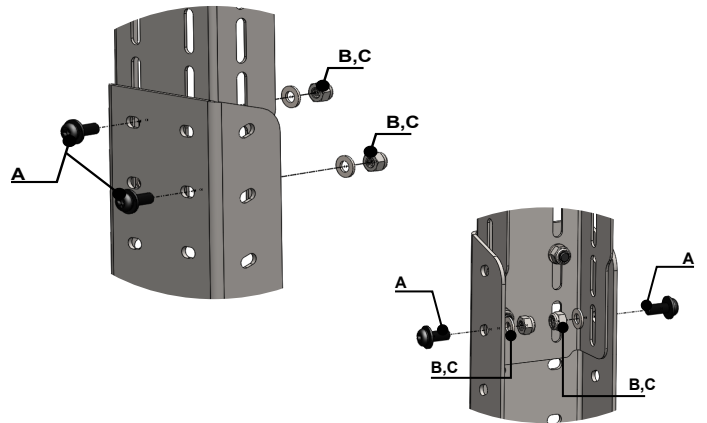
Torque 25 Nm.

### PASO 2



- AJUSTE DE ALTURA

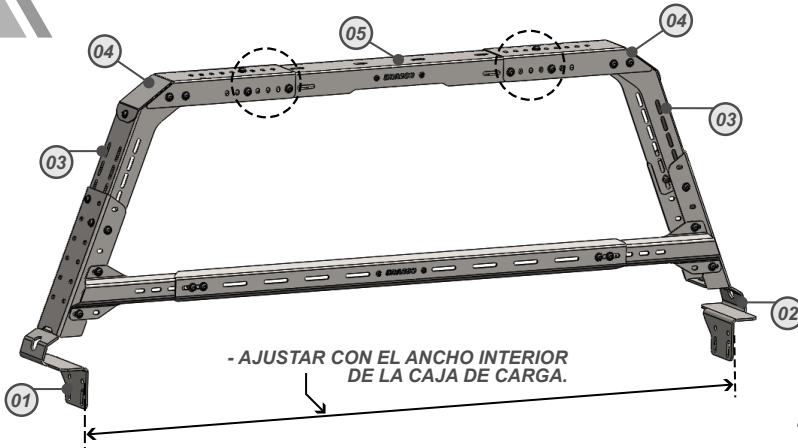
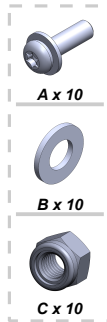
- ARMAR LATERALES



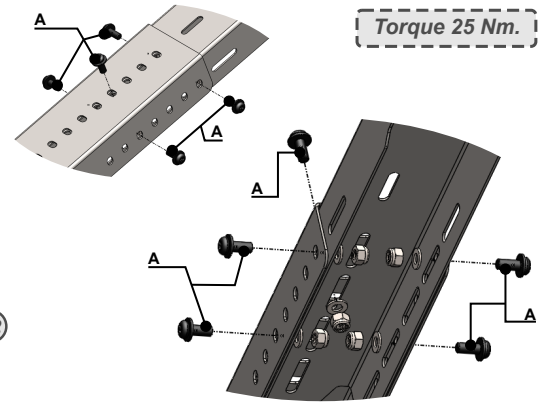
- CORTAR GOMA "09" y PEGAR EN PIEZA "02" y "03".

Torque 25 Nm.

### PASO 3



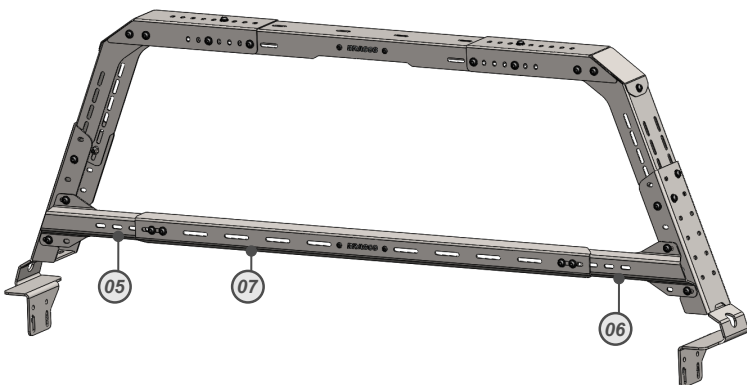
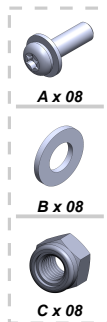
- AJUSTAR CON EL ANCHO INTERIOR DE LA CAJA DE CARGA.



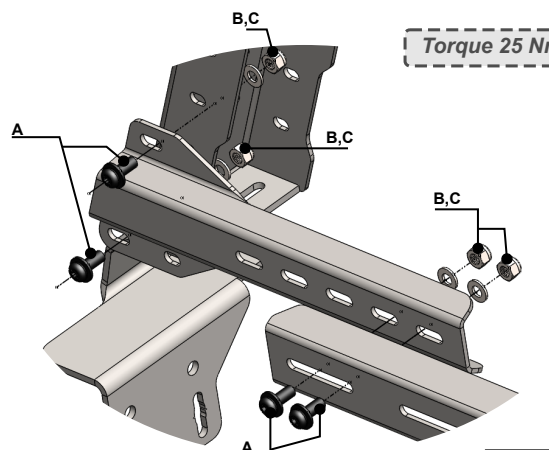
Torque 25 Nm.

- COLOCAR LARGUERO 05 PARA ARMAR EL ARCO

### PASO 4



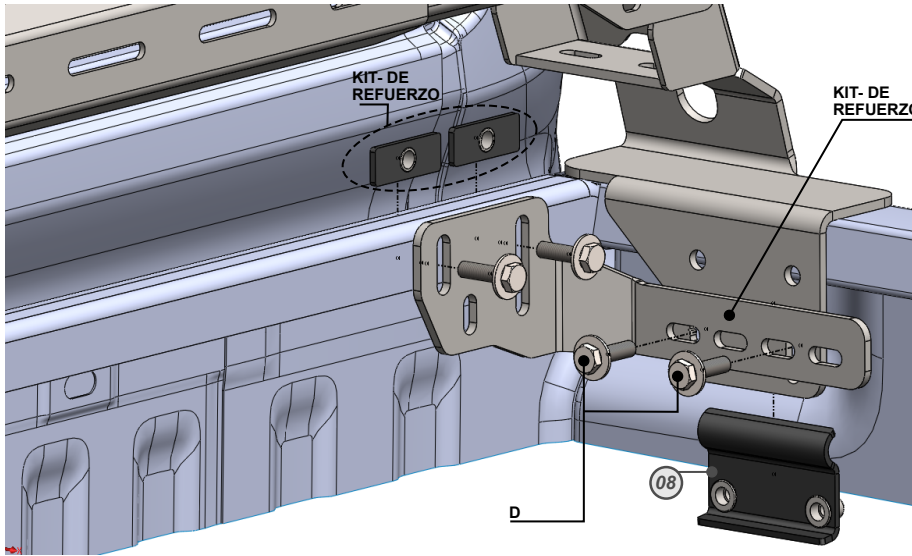
- REPETIR EN AMBOS LADOS



Torque 25 Nm.

## ARMADO EN CAJA DE CARGA

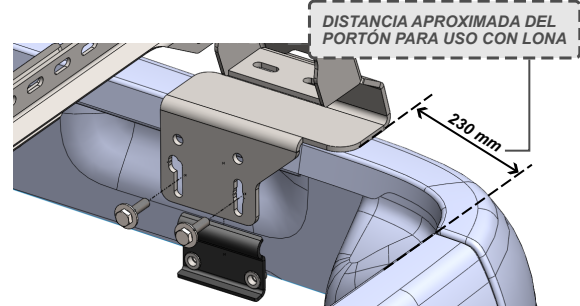
### PARTE DELANTERA



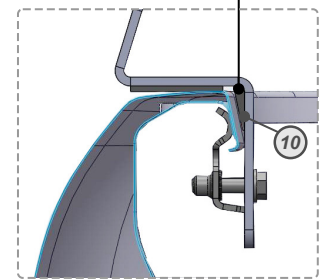
COLOCAR ARCO DELANTERO, AJUSTANDO CON CLAMP.  
- LA EMPRESA RECOMIENDA COLOCAR EL KIT DE REFUERZO (B-30/3 y B-30/4) YA QUE SIN UTILIZARLOS SE PUEDEN PRODUCIR GRAVES DAÑOS EN LA CAJA DEL VEHÍCULO.

### PARTE TRASERA

- UBICAR EL ARCO TRASERO A LA DISTANCIA MÁS ALEJADA QUE PERMITA EL AJUSTE CON EL CLAMP.



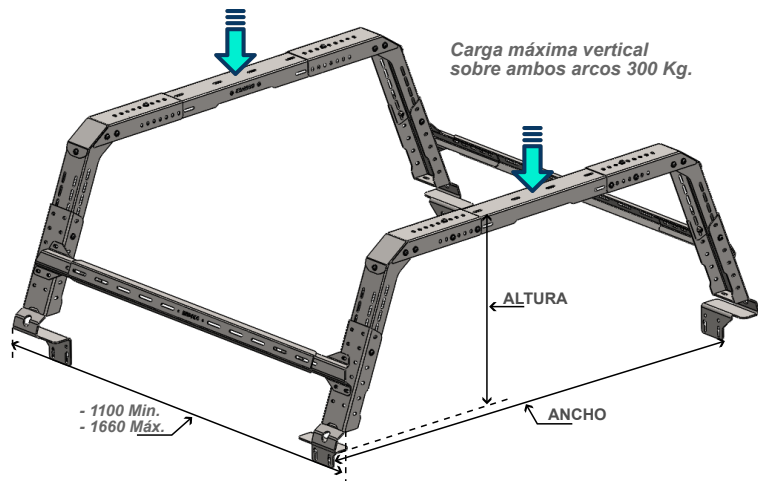
Suplementar en todas las bases RANGER -23 y AMAROK



## OPCIONES DE ARMADO

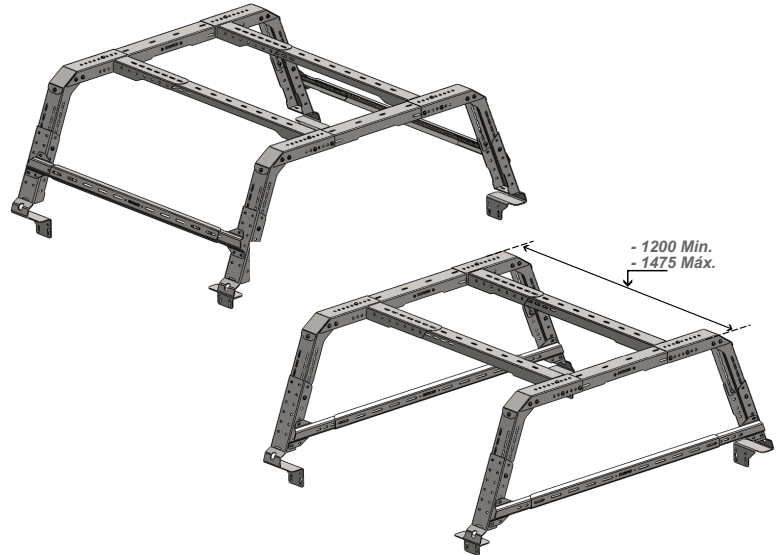
### B-30 x2

PESO: 34,4 Kg.



### B-30 x2 + B-30/1

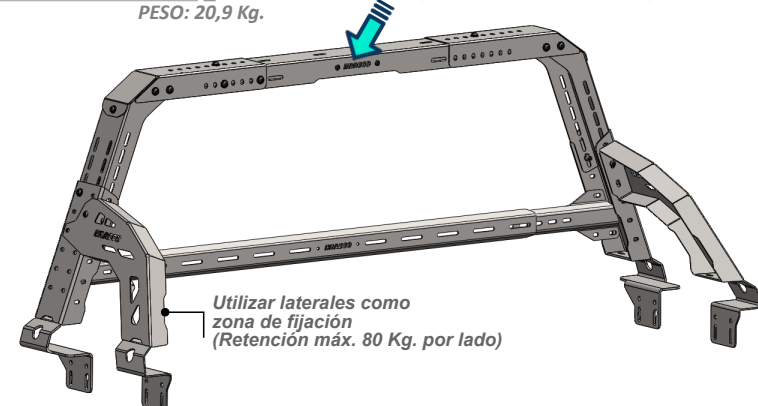
PESO: 40,8Kg.



### B-30 + B-30/2

PESO: 20,9 Kg.

Carga máxima inclinada 80 Kg.



	Altura	Ancho Máx.	Ancho Mín.
Máx	610 mm.	1865 mm.	1530 mm.
Mín	442 mm.	1730 mm.	1395 mm.

## NOTAS DE ARMADO

- Seguir todos los pasos detallados sin apretar definitivamente los tornillos.
- Una vez armada la barra sobre el vehículo, proceder a ajustar todos los tornillos con el torque indicado en cada paso de la secuencia de armado.
- SE PUEDE UTILIZAR PARA SUJETAR O APOYAR ELEMENTOS SIEMPRE QUE NO SE EXCEDA EL MÁXIMO INDICADO.